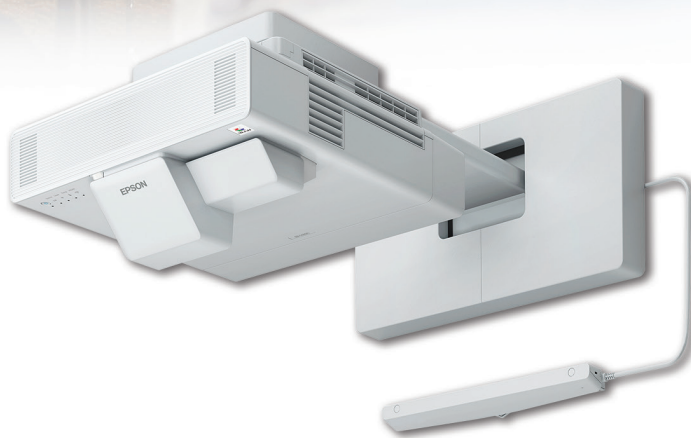


EPSON®

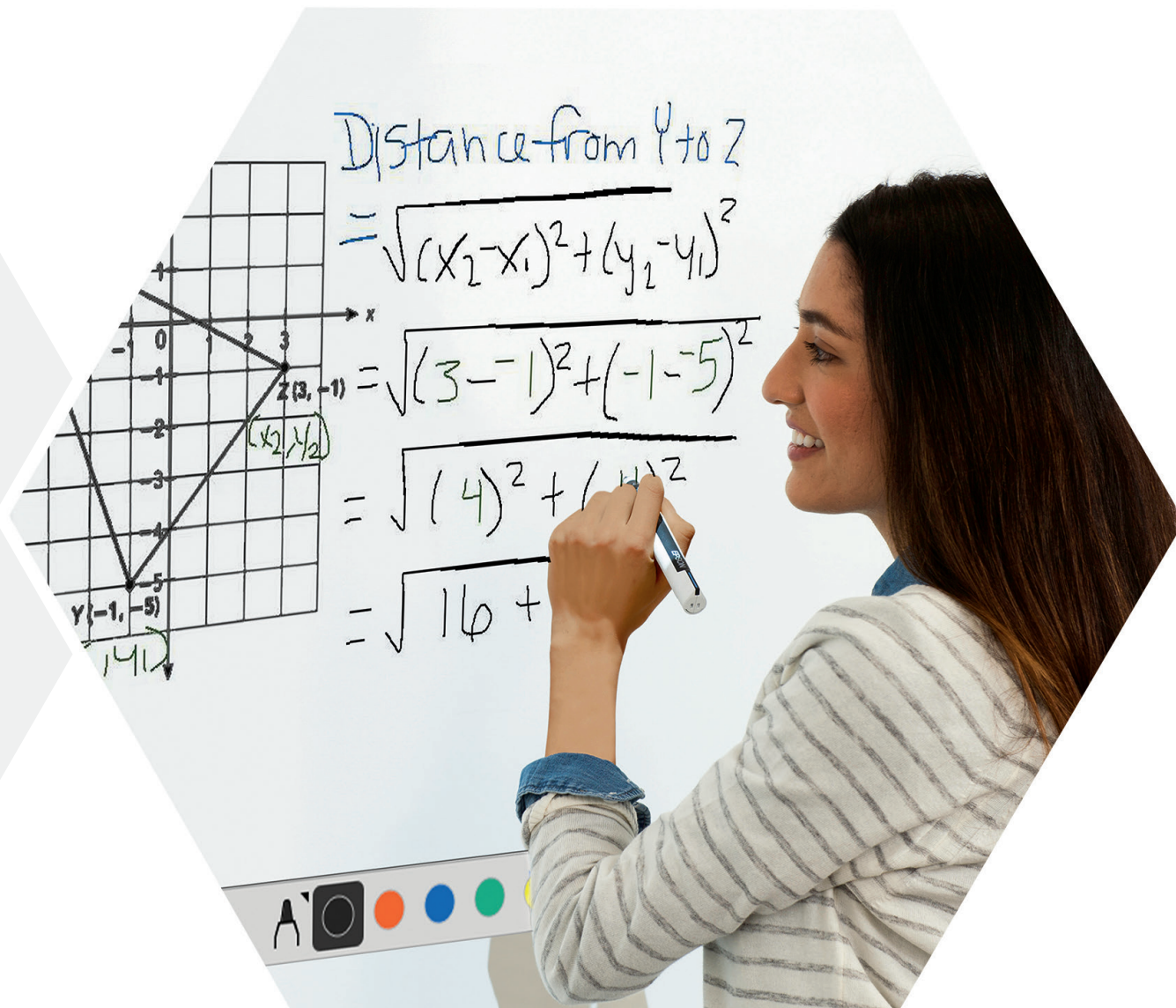
EPSON 770Fi SERIES

INTERACTIVE DISPLAY
SOLUTIONS



All projected images simulated.

EPSON Ultra-short throw — the world's best-selling interactive projector*.



Over **80%** market share in Australia*

A collaborative solution for today's classrooms

Epson's collaborative display solutions connect teachers, students, technology and ideas into one seamless digital experience, facilitating learning, communication and collaboration by turning virtually any flat surface into an interactive one. Available in laser and lamp-based models, Epson USTs are the perfect display solution for classrooms, study spaces, administrative offices and more. Built for today's learning environments, these displays offer whiteboard sharing for local, on-campus collaboration as well as engagement with remote participants from nearly anywhere in the world.

Leading schools and universities across the globe rely on Epson USTs to help bring their best ideas to life. Epson interactive displays change the way technology, users and their ideas converge by creating a seamless digital interactive experience. With a large, bright display that is optimised for outstanding readability, the 770Fi series' leading-edge interactive features and versatile connectivity options make it the ultimate interactive display for modern classrooms.

* Source: PMA, Mainstream and High-End, Worldwide Census 2023CYQ2.

Create, collaborate and share with interactive display solutions.

Extra-large digital whiteboard



Collaborate from nearly anywhere



Connect from a range of mobile devices³

PC-free whiteboarding

Save, print and email lessons directly from the display.

Up to 8 users*

Accommodate multiple users with dual pen and six points of touch.

Image size up to 120"¹

Scalable; adjust to the surface area you have available.

Collaborative

Share content on other network-connected displays².

Remote learning made easy

Share content with remote learners using leading conferencing applications, including Google Meet™, Zoom and Microsoft Teams®.

Versatile

Delivers immersive images without compromising whiteboard space.

Engaging

Interactive up to 120"¹ on virtually any flat surface. Purpose-built for education.

Connectivity

Seamlessly integrates with Chrome™, Mac®, Windows®, Android™ and iOS® devices³.

Reliable

Laser light source is virtually maintenance-free for up to 30,000 hours⁴ with no lamps to replace—ever.

*Requires optional touch module on 760Wi/770Fi/1480Fi.



RED-EYED TREE FROG

CHARACTERISTICS	
COMMON NAME:	Red-Eyed Tree Frog
SCIENTIFIC NAME:	Agalychnis callidryas
TYPE:	Amphibians
DIET:	Carnivore
SIZE:	1.5 to 2.75 inches

yas

Make an impact with vibrant, true-to-life colours

Command attention with sharp, detailed text

Amazing image quality.

Transform your classroom

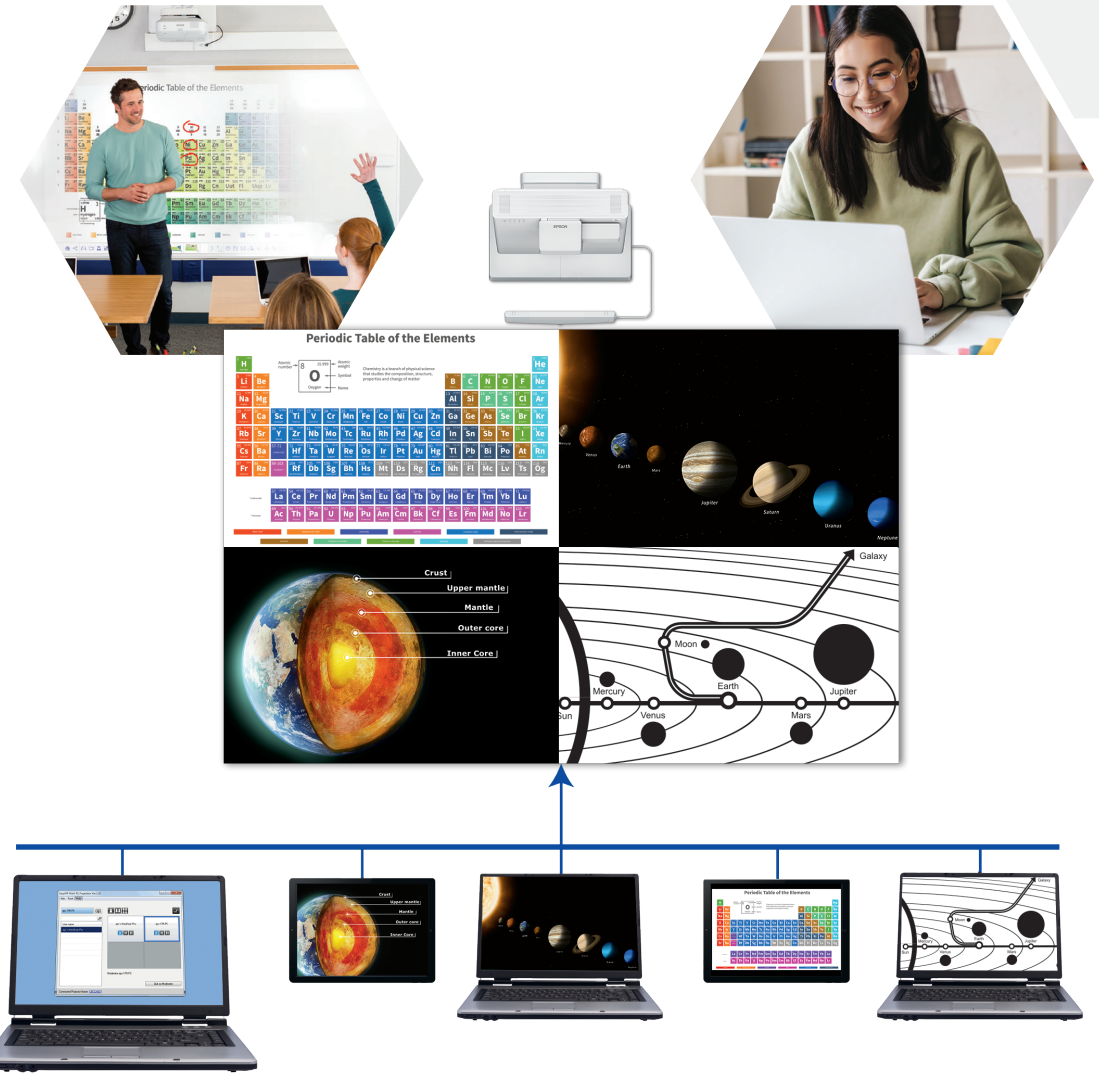
When it comes to creating captivating lesson plans that enhance collaboration, image quality makes all the difference. That's why Epson UST displays are engineered to deliver a stunning, true-to-life picture that can be seen from nearly anywhere in the classroom.

To achieve outstanding image quality, our displays utilise 3LCD technology. This sophisticated, innovative technology uses three chips to deliver bright, vibrant images that bring content to life.



Epson USTs also offer:

- Accurate, colour-rich presentations
- Flexible design with easy installation
- Convenient sharing and multitasking features



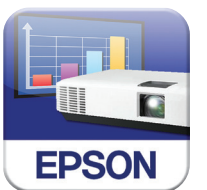
Connect. View. Collaborate.

Enhance learning with dynamic software





Designed for collaboration, these displays provide the tools teachers need to maximise participation in classrooms and hybrid learning environments. Epson UST displays offer connectivity to our most innovative software solutions⁵ for easy sharing while on the go.

Epson iProjection™ app

Complimentary Epson iProjection software enhances classroom collaboration by allowing teachers and students to connect, display and share content simultaneously to and from up to 50 connected devices³. Providing wireless connectivity to Chromebook™, iOS and Android mobile devices³, the app makes it easy to view learning materials from nearly any location.



Interactive Displays

				
Feature	760Wi	770Fi	1480Fi	1485Fi
Brightness (Colour/White) ⁶	4,100 lumens	4,100 lumens	5,000 lumens	5,000 lumens
Display Resolution	1280 x 800	1920 x 1080	1920 x 1080 ⁷	1920 x 1080 ⁷
Aspect Ratio	16:10	16:9	16:9	16:9
Light Source ⁴	Laser; 30,000 hours	Laser; 30,000 hours	Laser; 30,000 hours	Laser; 30,000 hours
Interactivity	Pen/Optional touch module	Pen/Optional touch module	Pen/Optional touch module	Pen/Finger
Network-Ready	✓	✓	✓	✓
Built-in Wi-Fi/ ⁵ Miracast [®]	✓	✓	✓	✓
Epson iProjection Compatible ³	✓	✓	✓	✓
21:9 and 16:6 Ultra Wide Display	–	Up to 110"	–	Up to 120"
PC-Free Annotation	✓	✓	✓	✓
PC-Free Whiteboard with Email/Save/Print	✓	✓	✓	✓
Sliding Split Screen ⁸	✓	✓	✓	✓
Whiteboard Sharing	Client only; connect up to 4 UST displays	Client only; connect up to 4 UST displays	Host; connect up to 4 UST displays	Host; connect up to 4 UST displays
Wall Mount	Optional	Optional	Optional	Included
Auto-Calibrating Touch Module	Optional	Optional	Optional	Included
Touch-Enabled Home Screen/Menu	With optional touch module	With optional touch module	With optional touch module	✓

Accessories



Ultra Short Throw Wall Mount ELPMB62



Interactive Touch Module ELPFT01



Interactive Pens Orange ELPPN05A



Blue ELPPN05B



Document Cameras DC07 DC13 DC21 DC30



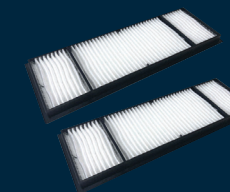
Active Speakers ELPSP02



Connection and Control Box ELPCB03N



Wireless LAN Module ELPAP11



Air Filters



Replacement Pen Tips Hard Soft/Felt

Epson Education Solutions

Epson has been a trusted partner and innovator in the classroom for over 25 years. We partner with you to offer a seamless experience, working with and across devices, curricula and infrastructures to best meet your specific needs, focusing on:

- Engaging students
- World-class customer service and support
- Cost-effective, high-quality solutions
- A commitment to the environment

Discover how Epson can help deliver laser-focused learning in your classrooms.

www.epson.com.au



EPSON®

1 Varies by model/aspect ratio; 760Wi is maximum 100" 16:10, 770Fi is maximum 100" 16:9; up to 110" 16:6, 1485Fi is up to 100" 16:9; 120" 16:6. **2** Requires 1480 Series, compatible with 700 Series. **3** For wireless functionality, including via the Epson iProjection App, the projector must be configured on a network, either through the Ethernet port on the projector (check model specifications for availability) or via a wireless connection. Check your owner's manual to determine if a wireless LAN module must be purchased separately to enable a wireless connection. Not all Epson® projectors are able to be networked. The Epson iProjection App does not support all files and formats. See www.epson.com.au for details. **4** No required maintenance for the light source for up to 30,000 hours (Extended Mode) or 20,000 hours (Normal Mode). Approximate time until brightness decreases 50% from first usage. Measured by acceleration test assuming use of 0.04 - 0.20 mg/m³ of particulate matter. Time varies depending on usage conditions and environment. Replacement of parts other than the light source may be required in a shorter period. **5** Internet connection required for download. Data usage fee may apply. **6** Colour brightness (colour light output) and white brightness (white light output) will vary depending on usage conditions. Colour light output measured in accordance with IDMS 15.4; white light output measured in accordance with ISO 21118. **7** Pixel shifting technology achieves Full HD resolution on screen. **8** Split Screen feature requires remote control. Consult your user manual for input combinations. **9** Requires Easy Interactive Driver. Certain functionality is only available through Epson Interactive Tools (EIT) software.

For a list of supported operating systems, visit www.epson.com.au